



*Better Air is Our Business®*



## **AmericanAirFilter® Industrial Panel Filter**

### **1" and 2" Industrial Grade Disposable Air Filters**

- **One-piece, high integrity, U-channel frame**
- **AmericanAirFilter® fiberglass media**
- **Ideal for heavy workloads**
- **Double-sided expanded metal**



Industrial Panel Filters provide the performance you expect from AmericanAirFilter® products along with the durability and rigidity you demand in an industrial-grade, disposable panel filter.

Industrial Panel Filters are constructed with heavy-duty, premium grade fiberglass media. Premium grade fiberglass has more fibers to ensure Industrial Panel Filter media offers high arrestance and cleans the air better than competitive filters.

Premium grade fiberglass also offers higher dust holding capacity which means longer service life and lower operating costs.

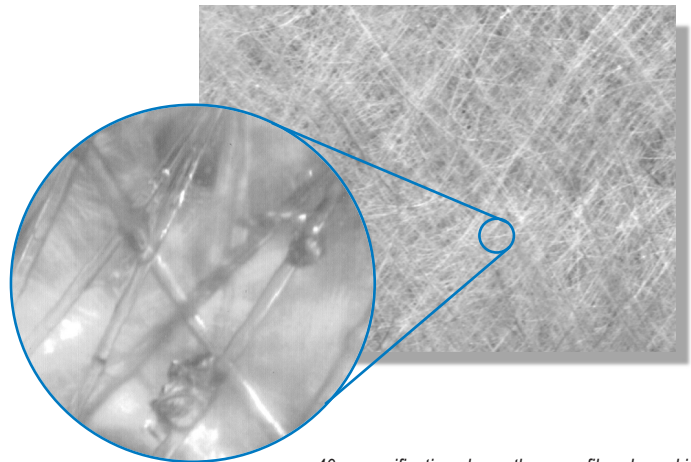
Compression resistant glass fibers decrease media pad deterioration allowing a slower rise in resistance as the filter collects dirt particles. A lower rise in resistance extends the life of the filter.

### **Premium Performance with Extra Strength**

The one-piece frame design ensures corner integrity during handling, installation and operation. It is made from durable, high strength chipboard that will stand up to harsh conditions.

Each Industrial Panel Filter is assembled with continuous beads of hot-melt adhesive applied to the frame's inside perimeter on both the air-entering and air-leaving sides, to firmly secure the pad/retainer assembly to the frame. Each Industrial Panel Filter contains AAF-made fiberglass media ensuring that you receive the filtration efficiency you expect.

The Industrial Panel Filter is built for the most demanding conditions with a double-sided, expanded-metal retainer, on both the air-entering and air-leaving sides, for maximum rigidity and durability. It is ideal for turbulent conditions and higher airflow rates.



*40x magnification shows the spun fiberglass skin of the Industrial Panel Filter pad.*

## Industrial Panel Filter

### Product Information

| Part No.    | Nominal Size (in.)                      | Actual Size (in.)   |
|-------------|---|---|
| 223-035-251 | 8 x 16 x 1                              | 7 <sup>7</sup> / <sub>8</sub> x 15 <sup>5</sup> / <sub>8</sub> x 3/4  |
| 223-041-251 | 8 x 30 x 1                              | 7 <sup>7</sup> / <sub>8</sub> x 29 <sup>5</sup> / <sub>8</sub> x 3/4  |
| 223-100-251 | 10 x 10 x 1                             | 9 <sup>7</sup> / <sub>8</sub> x 9 <sup>7</sup> / <sub>8</sub> x 3/4   |
| 223-200-251 | 10 x 20 x 1                             | 9 <sup>7</sup> / <sub>8</sub> x 19 <sup>5</sup> / <sub>8</sub> x 3/4  |
| 223-208-251 | 10 x 24 x 1                             | 9 <sup>7</sup> / <sub>8</sub> x 23 <sup>5</sup> / <sub>8</sub> x 3/4  |
| 223-210-251 | 10 x 25 x 1                             | 9 <sup>7</sup> / <sub>8</sub> x 24 <sup>5</sup> / <sub>8</sub> x 3/4  |
| 223-214-251 | 10 x 30 x 1                             | 9 <sup>7</sup> / <sub>8</sub> x 29 <sup>5</sup> / <sub>8</sub> x 3/4  |
| 223-276-251 | 10 x 36 <sup>1</sup> / <sub>4</sub> x 1 | 9 <sup>7</sup> / <sub>8</sub> x 36 <sup>1</sup> / <sub>4</sub> x 3/4  |
| 223-303-251 | 12 x 12 x 1                             | 11 <sup>7</sup> / <sub>8</sub> x 11 <sup>7</sup> / <sub>8</sub> x 3/4 |
| 223-308-251 | 12 x 16 x 1                             | 11 <sup>7</sup> / <sub>8</sub> x 15 <sup>5</sup> / <sub>8</sub> x 3/4 |
| 223-294-251 | 12 x 18 x 1                             | 11 <sup>7</sup> / <sub>8</sub> x 17 <sup>5</sup> / <sub>8</sub> x 3/4 |
| 223-314-251 | 12 x 20 x 1                             | 11 <sup>7</sup> / <sub>8</sub> x 19 <sup>5</sup> / <sub>8</sub> x 3/4 |
| 223-319-251 | 12 x 24 x 1                             | 11 <sup>7</sup> / <sub>8</sub> x 23 <sup>5</sup> / <sub>8</sub> x 3/4 |
| 223-321-251 | 12 x 25 x 1                             | 11 <sup>7</sup> / <sub>8</sub> x 24 <sup>5</sup> / <sub>8</sub> x 3/4 |
| 223-323-251 | 12 x 30 x 1                             | 11 <sup>7</sup> / <sub>8</sub> x 29 <sup>5</sup> / <sub>8</sub> x 3/4 |
| 223-324-251 | 12 x 30 <sup>3</sup> / <sub>4</sub> x 1 | 11 <sup>7</sup> / <sub>8</sub> x 30 <sup>3</sup> / <sub>4</sub> x 3/4 |
| 223-379-251 | 14 x 14 x 1                             | 13 <sup>7</sup> / <sub>8</sub> x 13 <sup>7</sup> / <sub>8</sub> x 3/4 |
| 223-371-251 | 14 x 20 x 1                             | 13 <sup>7</sup> / <sub>8</sub> x 19 <sup>5</sup> / <sub>8</sub> x 3/4 |
| 223-412-251 | 14 x 24 x 1                             | 13 <sup>7</sup> / <sub>8</sub> x 23 <sup>5</sup> / <sub>8</sub> x 3/4 |
| 223-375-251 | 14 x 25 x 1                             | 13 <sup>7</sup> / <sub>8</sub> x 24 <sup>5</sup> / <sub>8</sub> x 3/4 |
| 223-410-251 | 14 x 30 x 1                             | 13 <sup>7</sup> / <sub>8</sub> x 29 <sup>5</sup> / <sub>8</sub> x 3/4 |
| 223-400-251 | 15 x 20 x 1                             | 14 <sup>7</sup> / <sub>8</sub> x 19 <sup>5</sup> / <sub>8</sub> x 3/4 |
| 223-406-251 | 15 x 25 x 1                             | 14 <sup>7</sup> / <sub>8</sub> x 24 <sup>5</sup> / <sub>8</sub> x 3/4 |
| 223-596-251 | 15 x 30 x 1                             | 14 <sup>7</sup> / <sub>8</sub> x 29 <sup>5</sup> / <sub>8</sub> x 3/4 |
| 223-415-251 | 15 x 30 <sup>3</sup> / <sub>4</sub> x 1 | 14 <sup>7</sup> / <sub>8</sub> x 30 <sup>3</sup> / <sub>4</sub> x 3/4 |
| 223-448-251 | 16 x 16 x 1                             | 15 <sup>7</sup> / <sub>8</sub> x 15 <sup>5</sup> / <sub>8</sub> x 3/4 |
| 223-500-251 | 16 x 20 x 1                             | 15 <sup>7</sup> / <sub>8</sub> x 19 <sup>5</sup> / <sub>8</sub> x 3/4 |
| 223-515-251 | 16 x 22 <sup>1</sup> / <sub>4</sub> x 1 | 15 <sup>7</sup> / <sub>8</sub> x 22 <sup>1</sup> / <sub>4</sub> x 3/4 |
| 223-524-251 | 16 x 24 x 1                             | 15 <sup>7</sup> / <sub>8</sub> x 23 <sup>5</sup> / <sub>8</sub> x 3/4 |
| 223-600-251 | 16 x 25 x 1                             | 15 <sup>7</sup> / <sub>8</sub> x 24 <sup>5</sup> / <sub>8</sub> x 3/4 |
| 223-603-251 | 16 x 30 x 1                             | 15 <sup>7</sup> / <sub>8</sub> x 29 <sup>5</sup> / <sub>8</sub> x 3/4 |
| 223-643-251 | 18 x 18 x 1                             | 17 <sup>7</sup> / <sub>8</sub> x 17 <sup>5</sup> / <sub>8</sub> x 3/4 |
| 223-627-251 | 18 x 20 x 1                             | 17 <sup>7</sup> / <sub>8</sub> x 19 <sup>5</sup> / <sub>8</sub> x 3/4 |
| 223-635-251 | 18 x 24 x 1                             | 17 <sup>7</sup> / <sub>8</sub> x 23 <sup>5</sup> / <sub>8</sub> x 3/4 |

| Part No.    | Nominal Size (in.)                      | Actual Size (in.)   |
|-------------|---|---|
| 223-700-251 | 20 x 20 x 1                             | 19 <sup>5</sup> / <sub>8</sub> x 19 <sup>5</sup> / <sub>8</sub> x 3/4                           |
| 223-715-251 | 20 x 22 <sup>1</sup> / <sub>4</sub> x 1 | 19 <sup>5</sup> / <sub>8</sub> x 22 <sup>1</sup> / <sub>4</sub> x 3/4                           |
| 223-782-251 | 20 x 24 x 1                             | 19 <sup>5</sup> / <sub>8</sub> x 23 <sup>5</sup> / <sub>8</sub> x 3/4                           |
| 223-800-251 | 20 x 25 x 1                             | 19 <sup>5</sup> / <sub>8</sub> x 24 <sup>5</sup> / <sub>8</sub> x 3/4                           |
| 223-716-251 | 20 x 30 x 1                             | 19 <sup>5</sup> / <sub>8</sub> x 29 <sup>5</sup> / <sub>8</sub> x 3/4                           |
| 223-839-251 | 22 x 22 x 1                             | 21 <sup>7</sup> / <sub>8</sub> x 21 <sup>7</sup> / <sub>8</sub> x 3/4                           |
| 223-863-251 | 24 x 24 x 1                             | 23 <sup>7</sup> / <sub>8</sub> x 23 <sup>7</sup> / <sub>8</sub> x 3/4                           |
| 223-750-251 | 24 x 30 x 1                             | 23 <sup>7</sup> / <sub>8</sub> x 29 <sup>5</sup> / <sub>8</sub> x 3/4                           |
| 223-870-251 | 25 x 25 x 1                             | 24 <sup>5</sup> / <sub>8</sub> x 24 <sup>5</sup> / <sub>8</sub> x 3/4                           |
| 223-100-252 | 10 x 10 x 2                             | 9 <sup>7</sup> / <sub>8</sub> x 9 <sup>7</sup> / <sub>8</sub> x 1 <sup>3</sup> / <sub>4</sub>   |
| 223-200-252 | 10 x 20 x 2                             | 9 <sup>7</sup> / <sub>8</sub> x 19 <sup>5</sup> / <sub>8</sub> x 1 <sup>3</sup> / <sub>4</sub>  |
| 223-319-252 | 12 x 24 x 2                             | 11 <sup>7</sup> / <sub>8</sub> x 23 <sup>7</sup> / <sub>8</sub> x 1 <sup>3</sup> / <sub>4</sub> |
| 223-371-252 | 14 x 20 x 2                             | 13 <sup>7</sup> / <sub>8</sub> x 19 <sup>5</sup> / <sub>8</sub> x 1 <sup>3</sup> / <sub>4</sub> |
| 223-375-252 | 14 x 25 x 2                             | 13 <sup>7</sup> / <sub>8</sub> x 24 <sup>5</sup> / <sub>8</sub> x 1 <sup>3</sup> / <sub>4</sub> |
| 223-400-252 | 15 x 20 x 2                             | 14 <sup>7</sup> / <sub>8</sub> x 19 <sup>5</sup> / <sub>8</sub> x 1 <sup>3</sup> / <sub>4</sub> |
| 223-448-252 | 16 x 16 x 2                             | 15 <sup>7</sup> / <sub>8</sub> x 15 <sup>5</sup> / <sub>8</sub> x 1 <sup>3</sup> / <sub>4</sub> |
| 223-500-252 | 16 x 20 x 2                             | 15 <sup>7</sup> / <sub>8</sub> x 19 <sup>5</sup> / <sub>8</sub> x 1 <sup>3</sup> / <sub>4</sub> |
| 223-524-252 | 16 x 24 x 2                             | 15 <sup>7</sup> / <sub>8</sub> x 23 <sup>5</sup> / <sub>8</sub> x 1 <sup>3</sup> / <sub>4</sub> |
| 223-600-252 | 16 x 25 x 2                             | 15 <sup>7</sup> / <sub>8</sub> x 24 <sup>5</sup> / <sub>8</sub> x 1 <sup>3</sup> / <sub>4</sub> |
| 223-635-252 | 18 x 24 x 2                             | 17 <sup>7</sup> / <sub>8</sub> x 23 <sup>7</sup> / <sub>8</sub> x 1 <sup>3</sup> / <sub>4</sub> |
| 223-700-252 | 20 x 20 x 2                             | 19 <sup>5</sup> / <sub>8</sub> x 19 <sup>5</sup> / <sub>8</sub> x 1 <sup>3</sup> / <sub>4</sub> |
| 223-782-252 | 20 x 24 x 2                             | 19 <sup>5</sup> / <sub>8</sub> x 23 <sup>5</sup> / <sub>8</sub> x 1 <sup>3</sup> / <sub>4</sub> |
| 223-800-252 | 20 x 25 x 2                             | 19 <sup>5</sup> / <sub>8</sub> x 24 <sup>5</sup> / <sub>8</sub> x 1 <sup>3</sup> / <sub>4</sub> |
| 223-716-252 | 20 x 30 x 2                             | 19 <sup>5</sup> / <sub>8</sub> x 29 <sup>5</sup> / <sub>8</sub> x 1 <sup>3</sup> / <sub>4</sub> |
| 223-863-252 | 24 x 24 x 2                             | 23 <sup>7</sup> / <sub>8</sub> x 23 <sup>7</sup> / <sub>8</sub> x 1 <sup>3</sup> / <sub>4</sub> |
| 223-870-252 | 25 x 25 x 2                             | 24 <sup>5</sup> / <sub>8</sub> x 24 <sup>5</sup> / <sub>8</sub> x 1 <sup>3</sup> / <sub>4</sub> |

Industrial Panel Filters are available in a wide range of standard sizes; 1" and 2" thickness. Filters made with 1/2" thick media are ordered as special sizes. Special sizes are available in 1/2", 1", and 2" thickness starting with 6 1/2" x 8" face dimensions. Standard sizes are listed in the table above.

### Performance Data

#### Rated Initial Resistance (in. w.g.)

|           | 1/2" | 1"  | 2"  |
|-----------|------|-----|-----|
| @ 300 FPM | .05  | .10 | .13 |
| @ 500 FPM | NA   | .20 | .28 |
| @ 625 FPM | NA   | NA  | .38 |

Recommended final resistance is .50" w.g. for each thickness. Performance tolerances conform to Section 7.4 of ARI Standard 850-93.

#### Underwriters Laboratories Classification

Industrial Panel Filters are UL Classified. Testing was performed according to UL Standard 900 and CAN-4-S111.

#### Operating Temperature Limits

Industrial Panel Filters are designed for continuous operating temperatures up to 150°F (66°C).



AAF has a policy of continuous product research and improvement and reserves the right to change design and specifications without notice.

ISO Certified Firm